

WHEN RECORDED RETURN TO:
WHITE BEAR ANKELE TANAKA & WALDRON
2154 East Commons Avenue, Suite 2000
Centennial, CO 80122

Cherrylane Metropolitan District
(In the City of Thornton, Adams County, Colorado)

SPECIAL DISTRICT PUBLIC DISCLOSURE

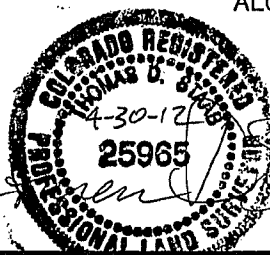
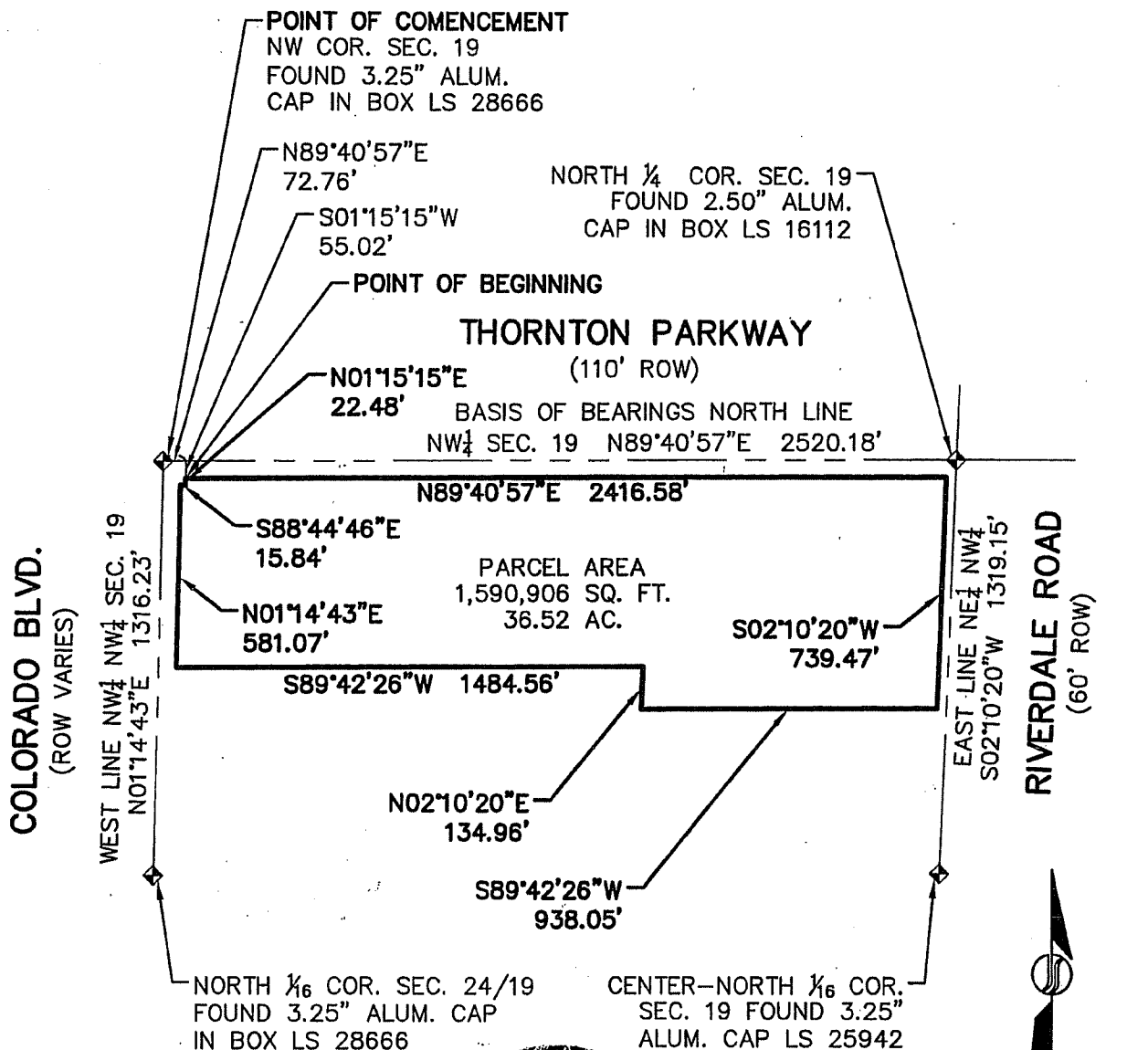
Pursuant to § 32-1-104.8 C.R.S.

Name of District:	Cherrylane Metropolitan District ("District")
Powers of the District as authorized by §32-1-1004, C.R.S. and the District's service plan as of the time of this filing:	Water, sanitation, streets, traffic and safety controls, parks and recreation, storm drainage, mosquito and pest control, transportation, security and covenant enforcement, subject to the limitations contained in the service plan for the District.
Service plan:	The District's service plan, which can be amended from time to time, includes a description of the District's powers and authority. A copy is available from the Division of Local Government.
	Cherrylane Metropolitan District is authorized by Title 32 of the Colorado Revised Statutes to use a number of methods to raise revenues for capital needs and general operations costs. These methods, subject to the limitations imposed by section 20 of Article X of the Colorado Constitution, include issuing debt, levying taxes, and imposing fees and charges. Information concerning directors, management, meetings, elections and current taxes are provided annually in the Notice to Electors described § 32-1-809 (1), C.R.S., which can be found at the District office, on the District's web site, on file at the Division of Local Government in the State Department of Local Affairs, or on file at the office of the clerk and recorder of each county in which the special district is located.
District boundaries:	Please see map attached as Exhibit A. Please note that the District's boundaries may change from time. Please contact the District for the latest information.

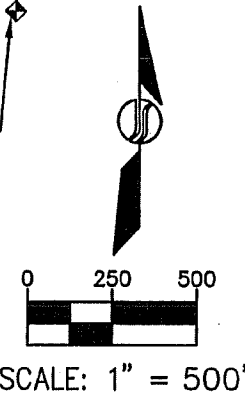
EXHIBIT A
Map


CHERRYLANE METROPOLITAN DISTRICT

LGID:66409



Thomas D. Stuber



 <p>JANSEN STRAWN CONSULTING ENGINEERS 45 WEST 2ND AVENUE DENVER, CO 80223 P.303.561.3333 F.303.561.3330</p>	PROJECT: CHERRYLANE SUBDIVISION	DATE: APRIL 19, 2012	SHEET
	JOB NO.: 10017	SCALE: 1" = 500'	1 OF 1